



ambledown
FINANCIAL SERVICES (PTY) LTD

- THIS IS NOT A MEDICAL SCHEME AND THE COVER IS NOT THE SAME AS THAT OF A MEDICAL SCHEME.
- THIS POLICY IS NOT A SUBSTITUTE FOR MEDICAL SCHEME MEMBERSHIP.
- THE MASTER POLICY ISSUED IS THE SOURCE OF ALL BENEFITS, RIGHTS, AND OBLIGATIONS AND EXCLUSIONS. TO DETERMINE YOUR INDIVIDUAL NEEDS, WE SUGGEST THAT YOU CONTACT YOUR BROKER AND REQUEST ADVICE FROM HIM / HER.

GAP COVER 2018



CONSTANTIA

Underwritten by Constantia Insurance Company Limited

2018 Product Range

As a member of a Private Medical Scheme, you would expect that an event in-hospital would be covered in full, this is not so. Most Medical Schemes will cover in-hospital expenses defined as services rendered by a Medical Practitioner at the Medical Scheme rate. However, most specialists today are charging rates that are substantially higher than the Medical scheme rates and you, as the member are liable for the difference, this is known as the tariff gap.

Ambledown Gap Cover is an insurance product that provides cover for you and your immediate family for the shortfall (Gap) resulting from any Medical Practitioner charging above the Medical Aid Tariff for in-hospital surgical procedures and certain out of hospital procedures. The insured will receive a benefit equivalent to the costs incurred as a result of the GAP for any hospital admission as an in-patient. The GAP is defined as services rendered by a medical practitioner who charges above the medical scheme tariff.



Ambledown Gap Cover is an offering that combines all of the following benefits, ie:



- **Gap Cover 100** provides for charges levied by the Medical Services Professionals above the Medical Scheme Tariff for associated services in-hospital and/or the necessity for chemotherapy or radiotherapy for the treatment of Cancer on an out-patient basis, and/or the necessity for kidney dialysis on an out-patient basis;
 - **Limited to 5 times the Medical Scheme Tariff**



- **Casualty Ward Benefit** covers you for treatment received in a casualty unit of a hospital provided that such treatment is not for routine physical treatment or any other medical examination or treatment other than emergency medical treatment.

You are covered when immediate treatment is required and your medical scheme does not provide you with cover and you become liable to pay the cost of the casualty event. This benefit will cover the facility fee, consultations, medications, radiology and pathology associated with admission to a registered hospital's casualty facility.

- **Treatment in a casualty unit of a hospital is subject to a specific limitation of R10,000 per insured person per annum**

We remind you that the Gap Cover 100 does not provide for charges above the tariff for the hospital costs or for additional costs of prosthesis, materials and medication. Cover is for the services provided by Specialists, General Practitioners and Medical Professionals such as Physiotherapists during the period of hospitalisation.

"Emergency" means the sudden and at the time, unexpected onset of a health condition that requires immediate medical treatment and/or an operation. If the treatment is not available, the emergency could result in weakened bodily functions, serious and lasting damage to organs, limbs or other body parts, or death. The determination of an Emergency will be done through diagnosis (through classification by the attending Medical Practitioner and / or the Casualty Unit) and not on symptoms presented. The Medical Practitioner that treated you and / or the Casualty Unit that you have been treated in should use the correct codes and classification on the invoices they send to you and /or your medical aid.

All Gap Cover Benefits above are limited to R150,000 per insured person per annum



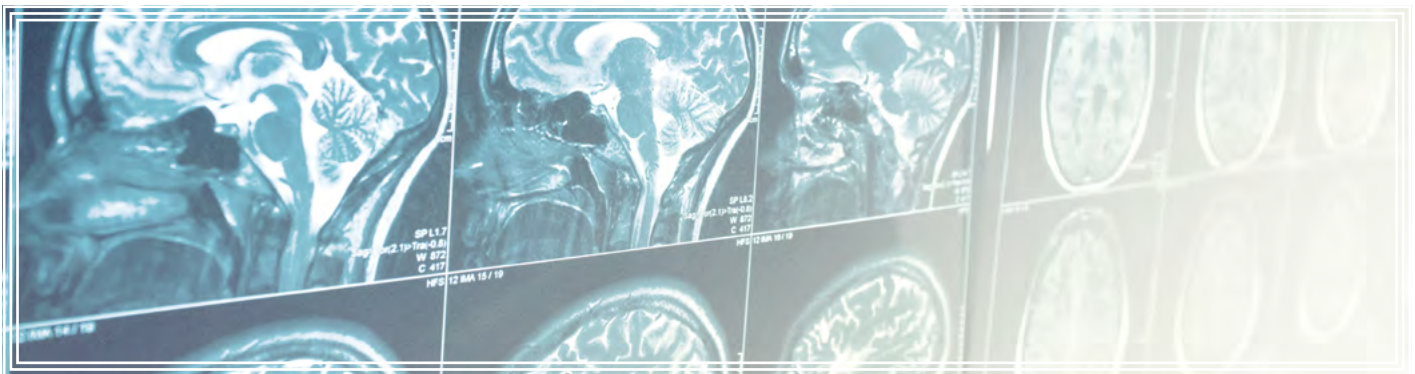
B E N E F I T S		L I M I T A T I O N S PER INSURED PERSON PER ANNUM	
GAP COVER 100		R 150,000	
CASUALTY WARD BENEFIT (R10,000 LIMITATION)		R 10,000	
P R E M I U M		PER FAMILY PER MONTH (incl.VAT): 18 TO 65 YEARS OLD	
		PER FAMILY PER MONTH (incl.VAT): 66 YEARS & OLDER	
S P E C I F I C L I M I T A T I O N S		O V E R A L L L I M I T A T I O N S	
Treatment in a casualty unit of a Hospital shall be limited to R10,000 in the aggregate per Insured Person per annum.		The Policy Benefits are subject to an overall benefit limitation of R150,000 in the aggregate per Insured Person per annum.	

GAP COVER
2018

Underwriting matters which are of importance



- Please note that this product will assist with the shortfalls for in-hospital expenses and does not provide cover for day-to-day expenses once your Medical Savings Account has been depleted, nor will it cover your expense if you are in the self-payment gap.
- The minimum entry age for the Principal insured person is 18 and the maximum entry age is 65. Applicants 66 and older have the option of selecting products for seniors.
- Extended Family Dependants: A family is defined as the principal insured and immediate family which includes the spouse and children. Extended family dependants are not considered as part of the family.
- Eligible child is a person who has not attained the age of 21 and this age may be extended to 26 in respect of a child who is unmarried, fully financially dependent on the Principal Insured and a dependant on the Principal Insured Persons' medical aid scheme.
 - Adopted and fostered children are eligible dependants if they are under 21 years of age, or they are under 26 years of age and who is unmarried, fully financially dependent on the Principal Insured and a dependant on the Principal Insured Persons' medical aid scheme.
 - There is no age limit for mentally or physically handicapped children who are financially dependent on the principal insured and a dependant on the Principal Insured Persons' medical aid scheme. There is no limit to the amount of children covered by the policy.
- Continuation: Any individual may apply to continue cover if that individual was a member of group policy and terminates his employment. Ambledown has the right to alter the premium rates to individual rates or adjust the premium for the additional costs of the debit order and other administrative tasks.
- Benefit upgrades: A 3 month general waiting period and 12 month pre-existing clause will apply to the additional benefits obtained when a member upgrades cover. The existing benefits enjoyed prior to the upgrade will not be subjected to the waiting periods mentioned.
- A 12 month pre-existing clause applies. The clause excludes claims for any treatment received for a condition for which treatment or advice has been received in the 12 months prior to the inception of the policy. The intention is to exclude any benefit where treatment or advice was received 12 months prior to inception. Once membership is greater than 12 months, then benefits are payable regardless of the date in which the illness manifested itself or the injury occurred.
- No benefits will be payable during a general 3 month waiting period for all treatment received unless the treatment was required as a result of an accident (external violent physical means).



Claiming Procedures

Claims should be submitted in writing (i.e. complete the claim form as soon as possible) by no later than six months from the admission date into hospital. Claim forms are obtainable from www.ambledown.co.za and should be returned to:

Ambledown Financial Services (Pty) Ltd
PO Box 1862, Cramerview, 2060
Fax: 011 463 1665
Email: claims@ambledown.co.za

Once you have submitted your claim form, copies of your medical aid statement and all related accounts, i.e. for the hospital, surgeon, anaesthetist, etc., must be forwarded to us as soon as possible.

Enquiries

Enquiries should be addressed to Ambledown:

Tel: **086 126 2533**
Fax: **011 463 1600**

Individual debit order business:
admin@ambledown.co.za

Group business:
premium@ambledown.co.za



Ambledown is an Authorised Financial Services Provider, No. 10287
PO Box 1862, Cramerview, 2060, Tel Number 0861 262533, Fax Number 011 463 1600
Website www.ambledown.co.za



Underwritten by Constantia Insurance Company Limited FSP No.: 31111